



Ultra Compact NC Rotary table

CK(R) series

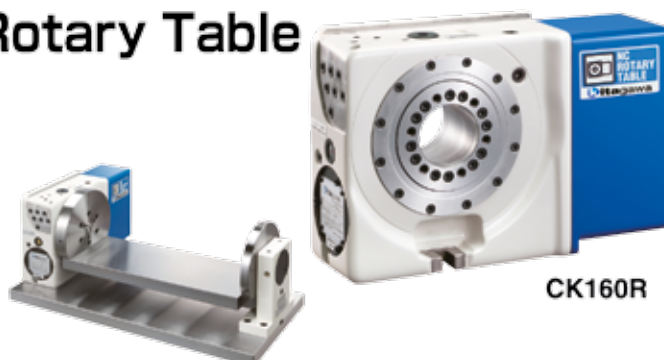
CK160·CKR160
CK200·CKR200

※1 CKR160/CKR200 : All ports are available for both pneumatic and hydraulic, not available for Coolant.

Ultra compact body Smallest-footprint NC Rotary Table

- Suitable for using with trunnion jig
- Block-less rotary joint※1
- Suitable for small-footprint machines

*CE correspondence



CK160R

Specifications

Model		CK160	CKR160	CK200	CKR200
Table dia (mm)		φ 114	φ 114	φ 130	φ 130
Register diameter on Face Plate (mm)		φ 65H7	φ 65H7	φ 65H7	φ 65H7
Spindle through hole diameter (mm)		φ 65	—	φ 65	—
Centre Height (mm)		140	140	150	150
Clamping method		Pneumatic	Pneumatic	Pneumatic	Pneumatic
Clamping torque (N·m) (In pneumatic 0.5MPa)		340	340	400	400
Motor axis reduced inertia (kg·m ²)		0.00009	0.00009	0.00017	0.00017
Servomotor (for FANUC specification)		α IF2/5000	α IF2/5000	α IF2/5000	α IF2/5000
Gear ratio		1/72	1/72	1/120	1/120
Max. spindle speed	FANUC specification (for min ⁻¹ /motor3000min ⁻¹)	41.6	41.6	25	25
	M signal specification (for min ⁻¹ /motor3000min ⁻¹)	41.6	41.6	25	25
Allowable work inertia (kg·m ²)		0.51	0.51	1.00	1.00
Indexing accuracy (sec)		20	20	20	20
Repeatability (sec)		4	4	4	4
Mass of product (kg)		40	41	47	49
Tail Spindle (as an option · P95 reference) Note)5		MSRC140/TSRC140 MSR142A/TSR142A	MSRC140/TSRC140 MSR142A/TSR142A	MSRC150 TSRC150	MSRC150 TSRC150
Rotary Joint (Maximum operating pressure 7Mpa)		—	※2 (Hydraulic/Pneumatic 7port)	—	※2 (Hydraulic/Pneumatic 8port)
Allowable Load	Horizontal (kg)	160			
	Vertical (kg)	80			
Allowable load (When clamped to table)	F (kN)	10			
	FXL (N·m)	600			
	FXL (N·m)	340		400	
Allowable cutting torque	T (N·m)	220			

Note) 1. The switch for pressure checking is incorporated to all series except TC / DM/ LR series. 2. The solenoid valve for the table clamp is incorporated. 3. Neither cable nor hose is fitted between NC rotary table and machine tool. 4. Rotary joint is fixed to jig side. 5 Because a mounting pitch varies with the machines, refer to the pitch of the tail spindle size drawing on P95. 6. Each product mass is determined by a Kitagawa M signal spec.

4th axis specifications

CK 160 R * * *

Type
CK: without rotary joint
CKR: with rotary joint

Table Size
160·200

Design No.
Motor type

Right/Left hand
R: Right hand
L: Left hand

M signal specification

CK 160 R V * *

Type
CK: without rotary joint
CKR: with rotary joint

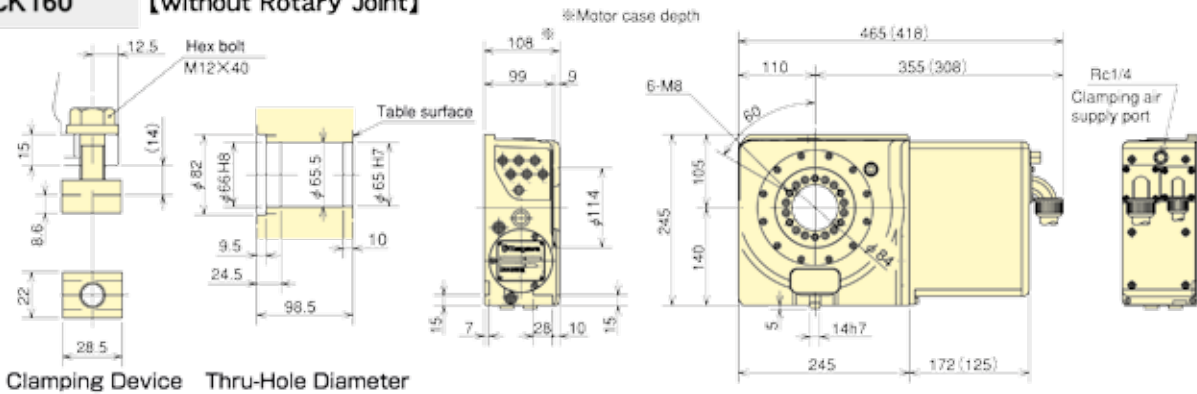
Table Size
160·200

Design No.
Quinte specification

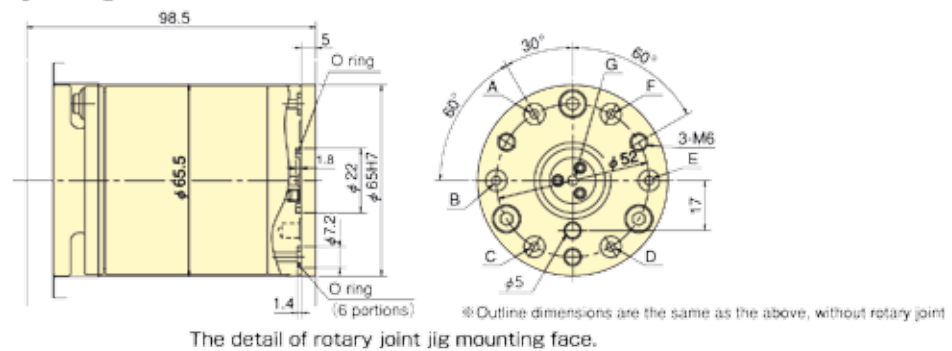
Right/Left hand
R: Right hand
L: Left hand

■ Dimensions

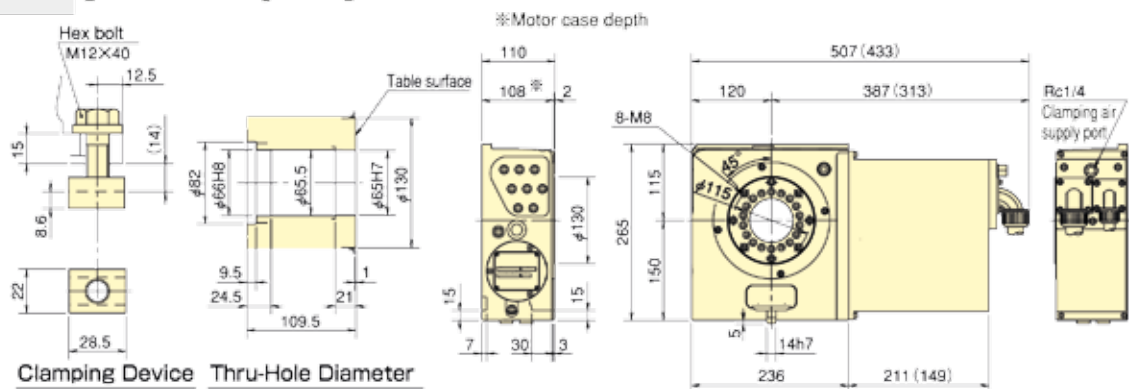
CK160 [without Rotary Joint]



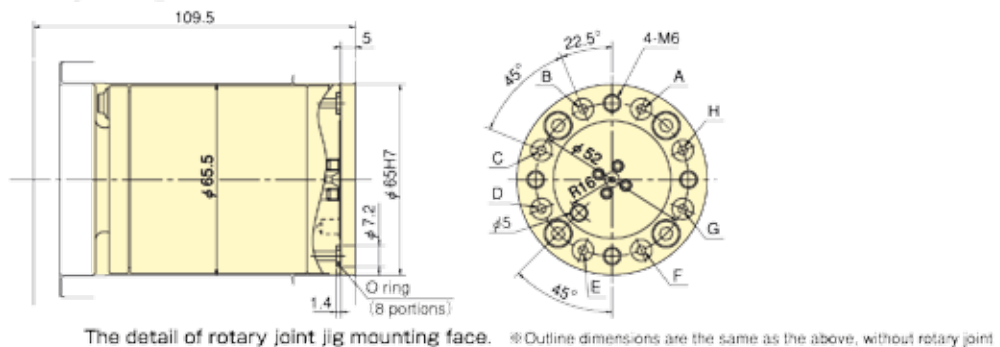
CKR160 [with Rotary Joint]



CK200 [without Rotary Joint]



CKR200 [with Rotary Joint]



CK